

Induction Motor 250W(□ 104mm)

250W

Induction Motor
250W(□ 104mm)

Motor 사양

Model 10IDGE-250F□-T: Gear Type Shaft 10IDDE-250F-T: D-Cut Type Shaft 10IDKE-250F-T: Key Type Shaft	Output W	Voltage V	Frequency Hz	Poles	Duty	Starting Torque		Rated Load			Capacitor μF / VAC	
						kgfcm	N.m	Speed r/min	Current A	Torque kgfcm N.m		
Terminal Box Type												
10ID◇E-250F□-T	250	1∅ 220 1∅ 240	50	4	Cont.	11.00 13.50	1.100 1.350	1250 1300	2.29 2.17	19.48 18.74	1.948 1.874	13.0/450

1) 모터 모델명 ◇ 자리에는 모터 출력축 타입명이 들어갑니다.

(G: Gear Type / D: D-Cut Type / K: Key Type) Gear Type Shaft는 감속기 부착용이며 D-Cut 및 Key Type Shaft는 모터 단독 사용 시의 출력축입니다.

2) 모터 출력축 타입이 Gear Type일 경우, ◇ 안에는 부착되는 감속기의 모델 타입명이 들어갑니다.

3) 전압코드 E는 TP(Thermal Protector) 부착 사양입니다.

감속기 부착 시 최대허용토크

50Hz

Motor Model	Gearbox Model	감속비 r/min	3	5	9	10	15	20	25	30	40	50	60	90	100	120	150	180	
			kgfcm	50.0	80.0	145.0	150.0	220.0	270.0	335.0	400.0	400.0	400.0	400.0	400.0	400.0	400.0	400.0	400.0
10IDGE-250FU-T	10UBK □ BH	N.m	4.90	7.84	14.21	14.70	21.56	26.46	32.83	39.20	39.20	39.20	39.20	39.20	39.20	39.20	39.20	39.20	39.20

Motor Model	Gearbox Model	감속비 r/min	5	7.5	10	15	20	25	30	40
			kgfcm	70.0	100.0	130.0	185.0	240.0	290.0	325.0
10IDKE-250F-T	10WHD □ -040	N.m	6.86	9.80	12.74	18.13	23.52	28.42	31.85	29.89

Motor Model	Gearbox Model	감속비 r/min	15	20	25	30	40	50	60	80	100	120	160	200	225	240
			kgfcm	213.3	284.4	355.5	426.6	568.8	711.0	853.2	1137.6	1422.0	1706.4	2275.3	2844.1	3000.0
10IDGE-250FHC-T	10HC □ -◇	N.m	20.90	27.87	34.84	41.81	55.74	69.68	83.62	111.49	139.36	167.23	222.98	278.72	294.00	294.00

1) 감속기 모델명 □ 안에는 감속비가 들어갑니다.

2) 위의 표에서 색칠된 범위의 감속비를 선택했을 때 감속기의 출력축은 모터의 출력축과 같은 방향으로 회전합니다.

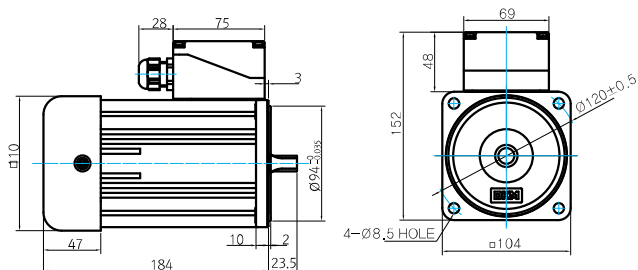
흰색 바탕 범위의 감속비에서는 감속기 출력축은 모터 출력축의 회전방향과 반대방향으로 회전합니다.

3) 회전속도(r/min)는 모터의 동기회전속도(50Hz:1500r/min, 60Hz:1800r/min)를 감속비로 나누어 계산합니다. 실제 회전속도는 부하의 크기에 따라 표시보다 2~20% 정도 느립니다.

Dimensions

MOTOR ONLY

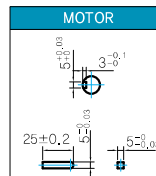
MOTOR MODEL:
10ID□E-250F-T



MOTOR OUTPUT SHAFT

MODEL	SPEC
D-CUT TYPE	
KEY TYPE	
10ID□-250F	
10ID□-250F	

KEY SPEC

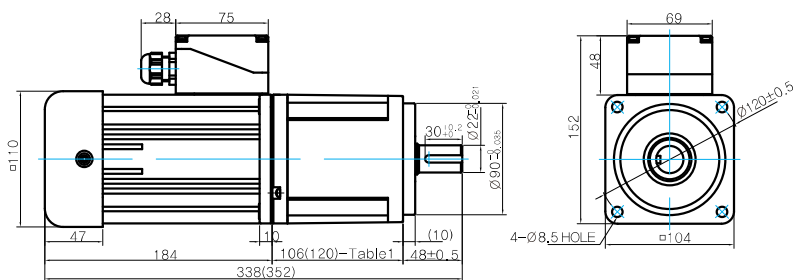


GEARED MOTOR

U TYPE GEARBOX

MOTOR MODEL:
10IDGE-250FU-T

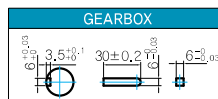
GEARBOX MODEL:
10UBK□BH



GEARBOX OUTPUT SHAFT

MODEL	SPEC
KEY TYPE	
10UBK□BH	

KEY SPEC



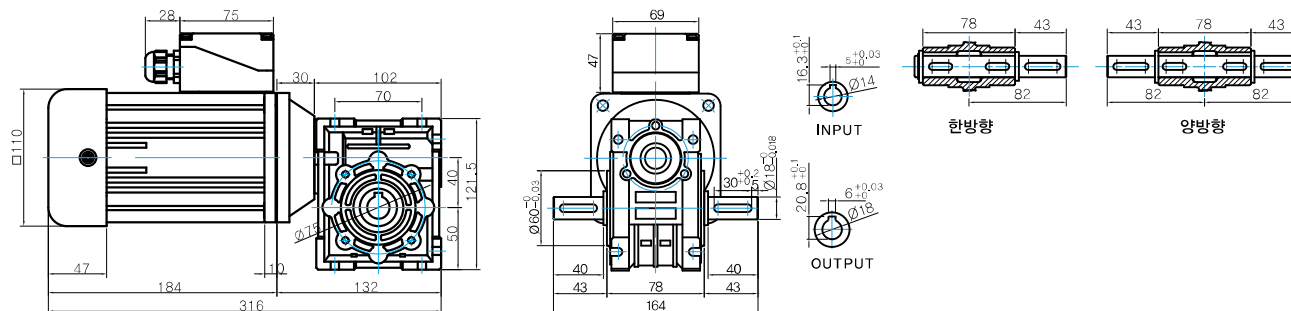
106(120)-Table1

SIZE(mm)	GEAR RATIO
106	10UBK3BH - 10UBK60BH
120	10UBK90BH - 10UBK180BH

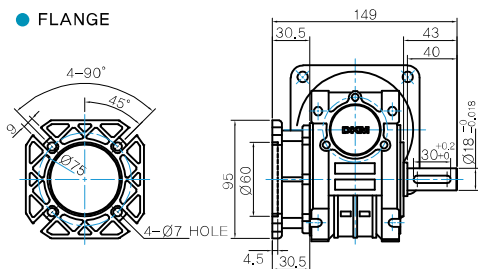
WH TYPE GEARBOX

MOTOR MODEL:
10IDKE-250F-T

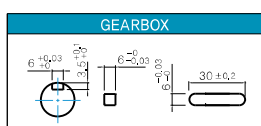
GEARBOX MODEL:
10WHD□-040



FLANGE



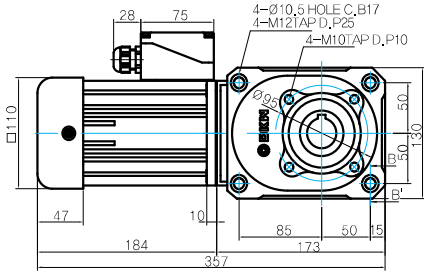
KEY SPEC



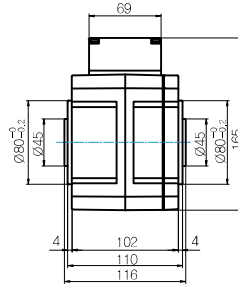
Induction Motor 250W(□ 104mm)

HC TYPE GEARBOX

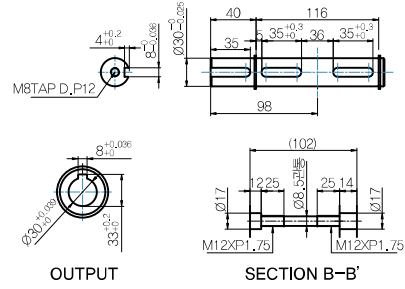
● GEARBOX MODEL :
10IDGE-250FHC-T (GENERAL FAN)



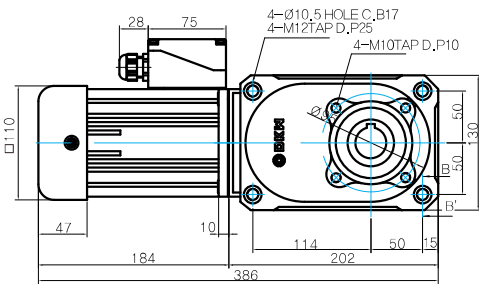
● GEARBOX MODEL :
10HC(15~60)□



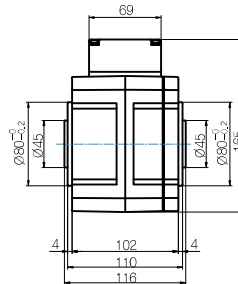
● SHAFT



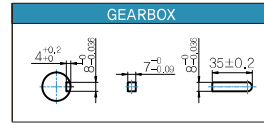
● GEARBOX MODEL :
10IDGE-250FHC-T (GENERAL FAN)



● GEARBOX MODEL :
10HC(80~240)□



● KEY SPEC

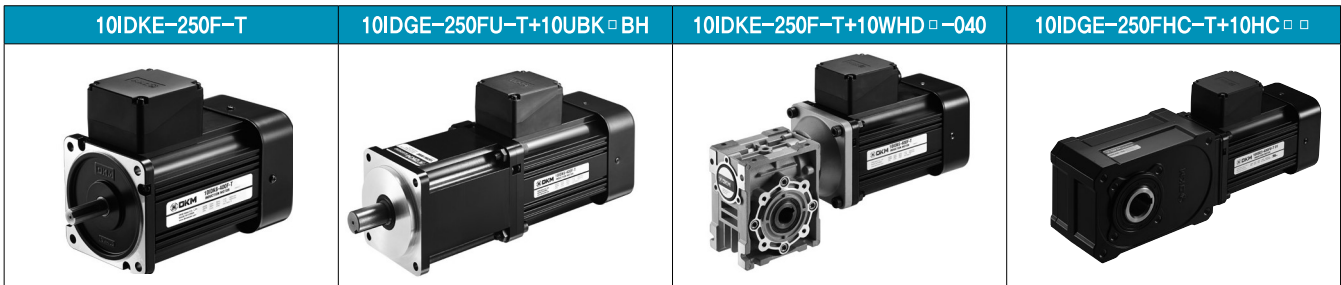


WEIGHT

PART	WEIGHT(kg)
MOTOR	6.10
10UBK3BH - 10UBK9BH	2.00
10UBK10BH - 10UBK15BH	2.15
10UBK20BH - 10UBK60BH	2.30
10UBK90BH - 10UBK180BH	2.50
10WHD □-040	2.20
10HC15-◇	5.50
10HC20-◇ - 10HC60-◇	5.60
10HC80-◇ - 10HC240-◇	6.40

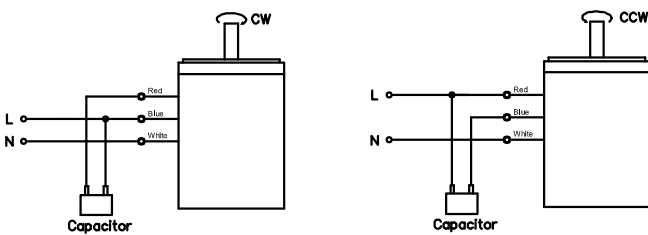
*출력 FLANGE와 SHAFT는 별매입니다.

Motor Images



Connection Diagrams

Terminal Box Type



- 회전방향은 모터 축 측에서 본 방향을 나타냅니다.
- CW는 시계방향, CCW는 반시계방향입니다.